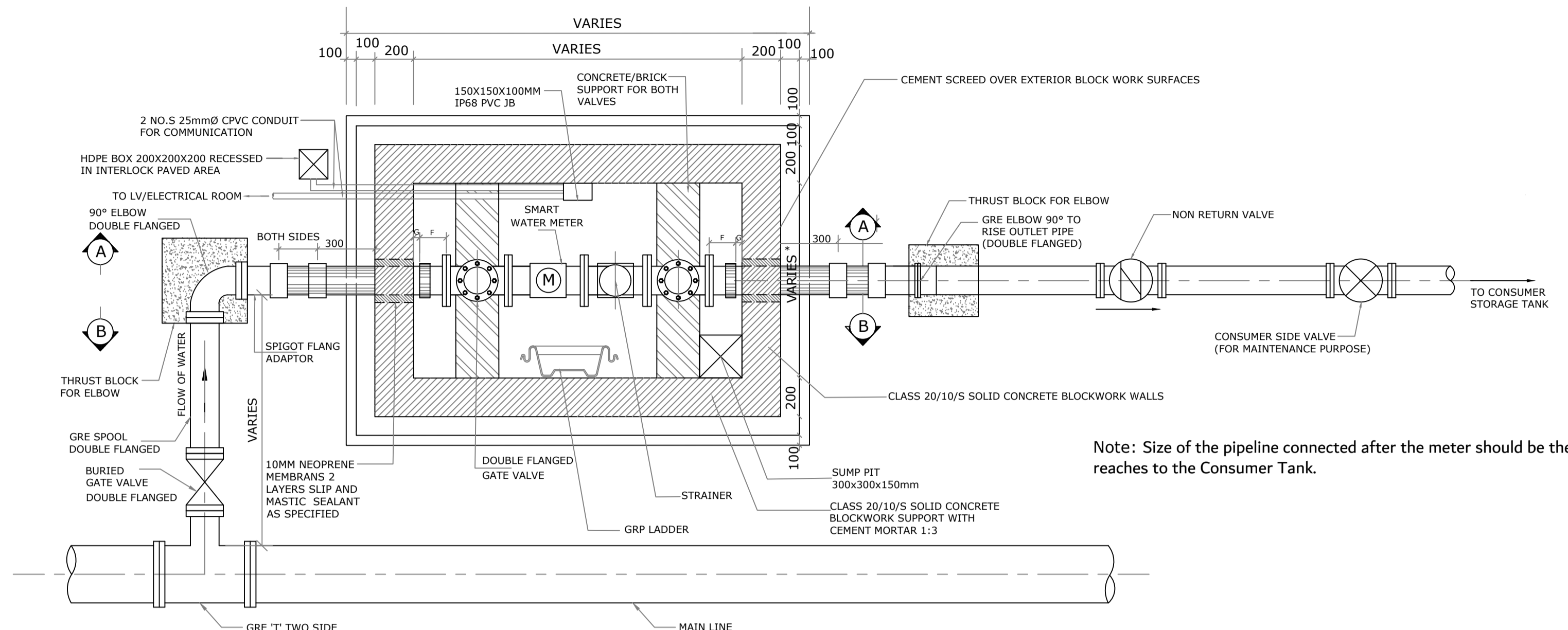


GENERAL ARRANGEMENT OF METER CHAMBERS WITHIN BLOCKPAVING AREAS

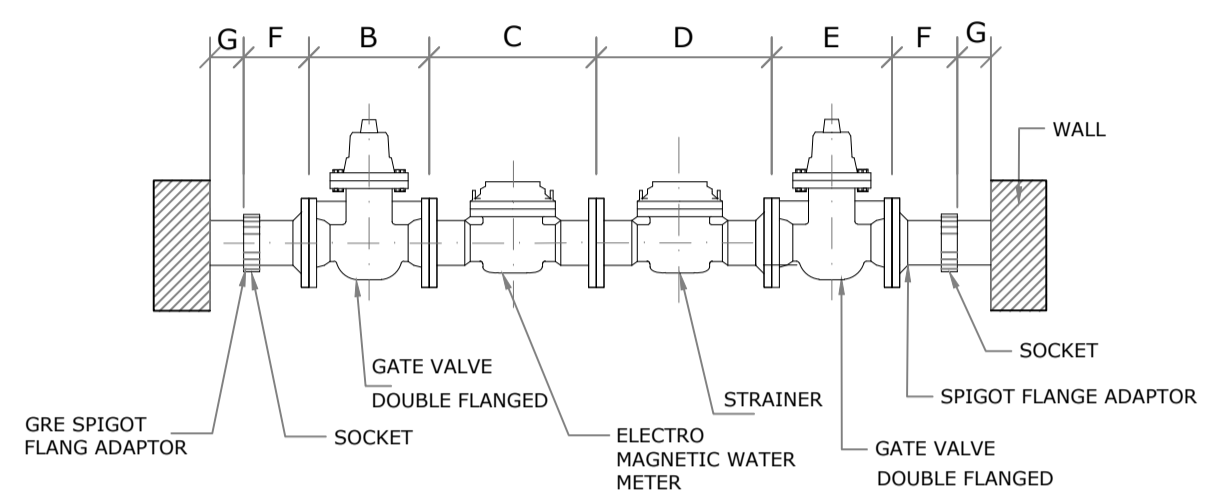


PLAN

Note: Size of the pipeline connected after the meter should be the same size of the meter until it reaches to the Consumer Tank.

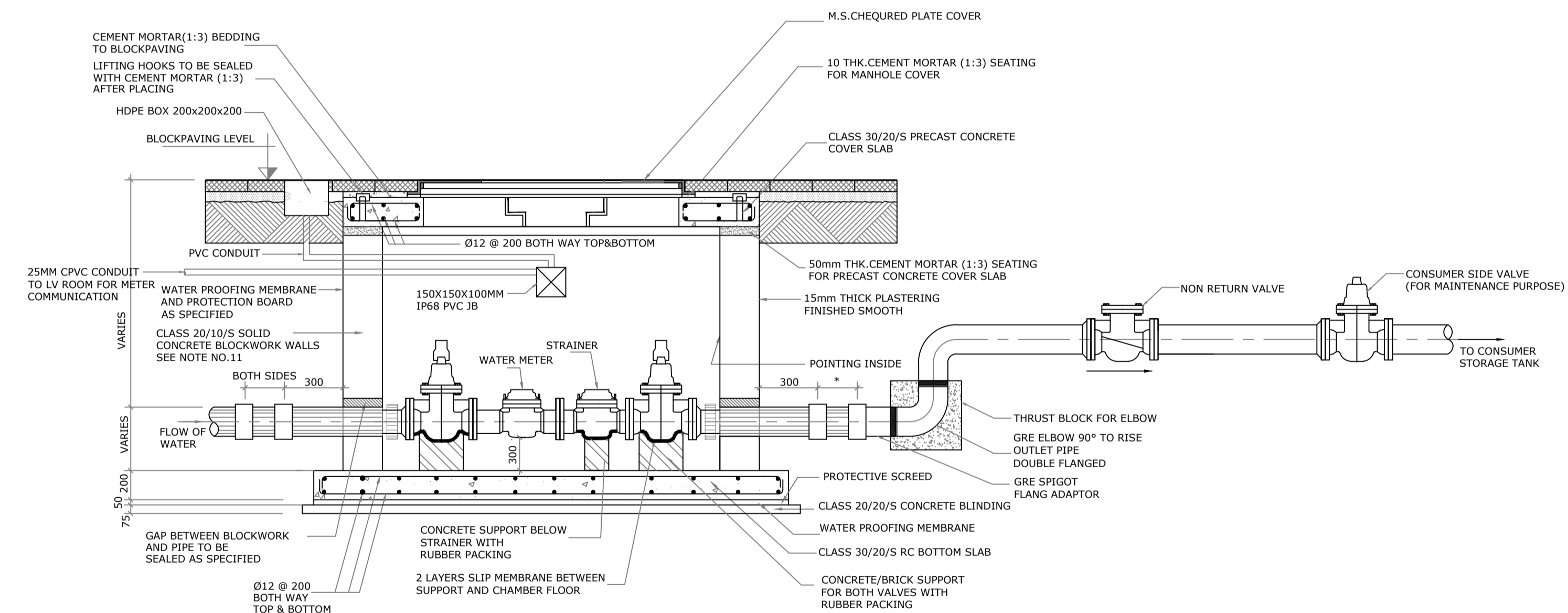
METER CHAMBER DIMENSION												
WATER METER SIZE	INLET VALVE (L)	METER (L)	STRAINE R (L)	OUTLET VALVE (L)	SPIGOT FLANGE ADAPTOR (L) F	CLEARANCE BETWEEN SOCKET AND CHAMBER WALLS (L) G	TOTAL LENGTH (B+C+D+E+F+G)	CLEARANCE AT BOTH SIDES OF METER IN WIDTH FROM CHAMBER WALLS (200x200)	METER WIDTH H	TOTAL WIDTH I	CHAMBER DIMENSION (Minimum)	CHAMBER COVER DIMENSION (Minimum)
50	178	200	300	178	---	250x250(500)	1356	400	110	510	1400x700	900x600
80	203	200	350	203	---	250x300(550)	1506	400	140	540	1600x700	900x600
100	229	250	350	229	260x260(520)	150x150(300)	1878	400	165	565	2000x700	900x600
150	267	300	500	267	270x270(540)	150x150(300)	2174	400	220	620	2200x700	1100x600
200	292	350	500	292	260x260(520)	150x150(300)	2254	400	280	680	2400x700	1100x600
300	330	500	500	330	260x260(520)	200x200(400)	2580	400	375	775	2600x800	1100x600

ALL UNITS ARE IN MM

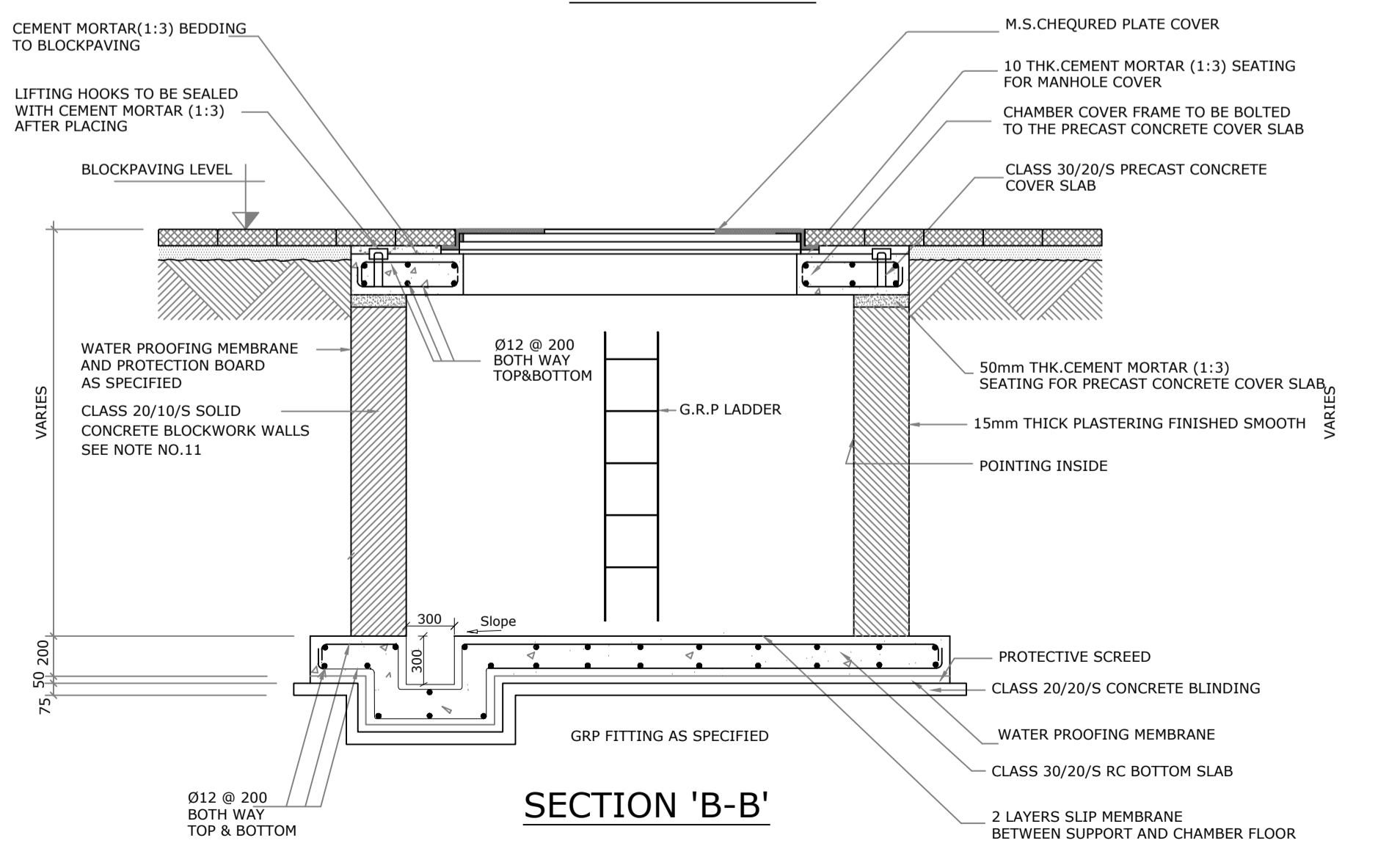


VALVE AND FLOW METER ARRANGEMENT

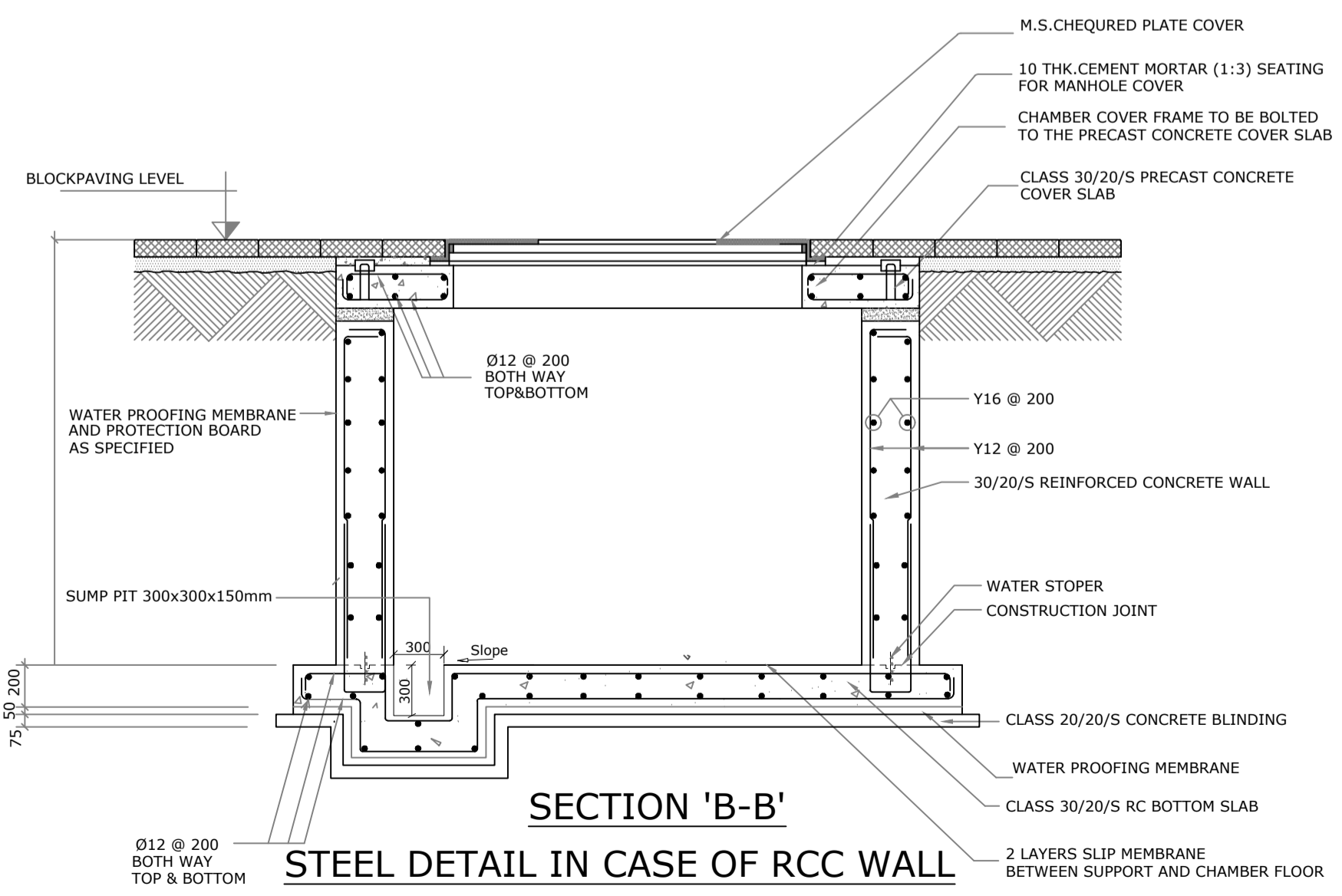
METER SIZE, METER CAPACITY AND STORAGE TANK REQUIREMENTS				
Meter Size (mm)	Meter Capacity/ Quantity of Water the Meter can Deliver in 24 Hours (m ³ /day)	Pipe Size to be Connected Between the Meter and Storage Tank. (mm)	Storage Tank Requirement for Standard Residential Premises	Storage Tank Requirement for Labor Accommodation and other High Consumption Premises
50	102-203	50	Equivalent to 24 Hours Consumption	Equivalent to 48 Hours Consumption
80	203-521	80	Equivalent to 24 Hours Consumption	Equivalent to 48 Hours Consumption
100	521-814	100	Equivalent to 24 Hours Consumption	Equivalent to 48 Hours Consumption
150	814-1829	150	Equivalent to 24 Hours Consumption	Equivalent to 48 Hours Consumption
200	1829- 3255	200	Equivalent to 24 Hours Consumption	Equivalent to 48 Hours Consumption
300	3255- 7324	300	Equivalent to 24 Hours Consumption	Equivalent to 48 Hours Consumption



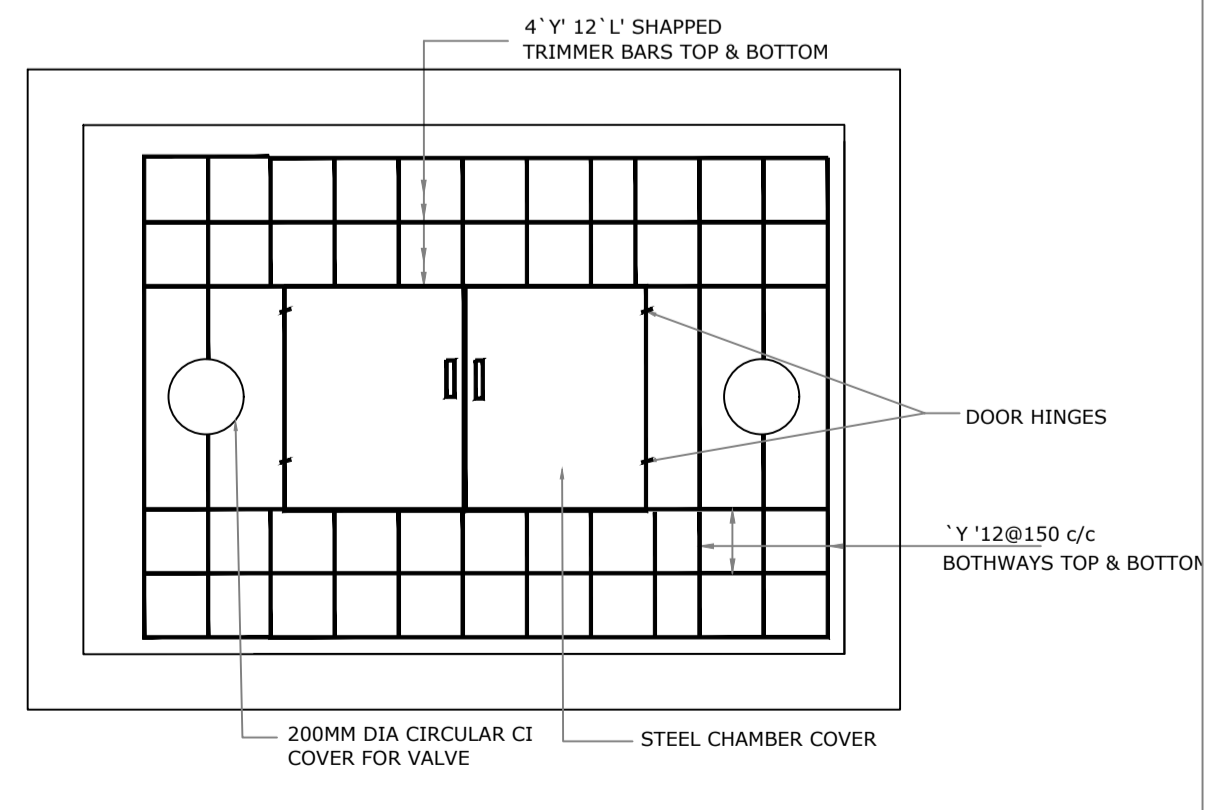
SECTION 'A-A'



SECTION 'B-B'




SECTION 'B-B'



REINFORCEMENT DETAILS

AMI 2" to 12" BULK WATER METER (GRE CONNECTION) INSTALLATION IN CHAMBER

NOTES:
Refer Bulk Water Meter Installation in Chamber-GRE Connection-Guidelines-Rev5

REV.	DATE	DRN BY	CH'D BY	AP'D BY	DESCRIPTION
<p>  دولة الإمارات العربية المتحدة دبي كهرباء و مياه دبي GOVERNMENT OF DUBAI P.O. BOX: 564, DUBAI - U.A.E. FAX: 324 4822. TEL: 324 4444 </p>					
<p> DEPARTMENT: PROJECTS & ENGINEERING (WATER) TEL : 04-3220003, EMAIL: Brnry.N@ewa.gov.ae </p>					
<p> PROJECT: AMI (ADVANCED METERING INFRASTRUCTURE) WATER METER INSTALLATION </p>					
<p> TITLE: AMI - WATER BULK WATER METER INSTALLATION IN CHAMBER (50MM TO 300MM DIA. GRE CONNECTION) </p>					
PREPARED BY: <i>Shafiq</i>		CHECKED BY: <i>Ahmed</i>		SCALE: N.T.S	
DESIGNED BY: <i>Ahmed</i>		APPROVED BY: <i>Brnry</i>		DATE: 02.01.2026	
DRAWING NO: PEW-STD-AMI-004					REV 5